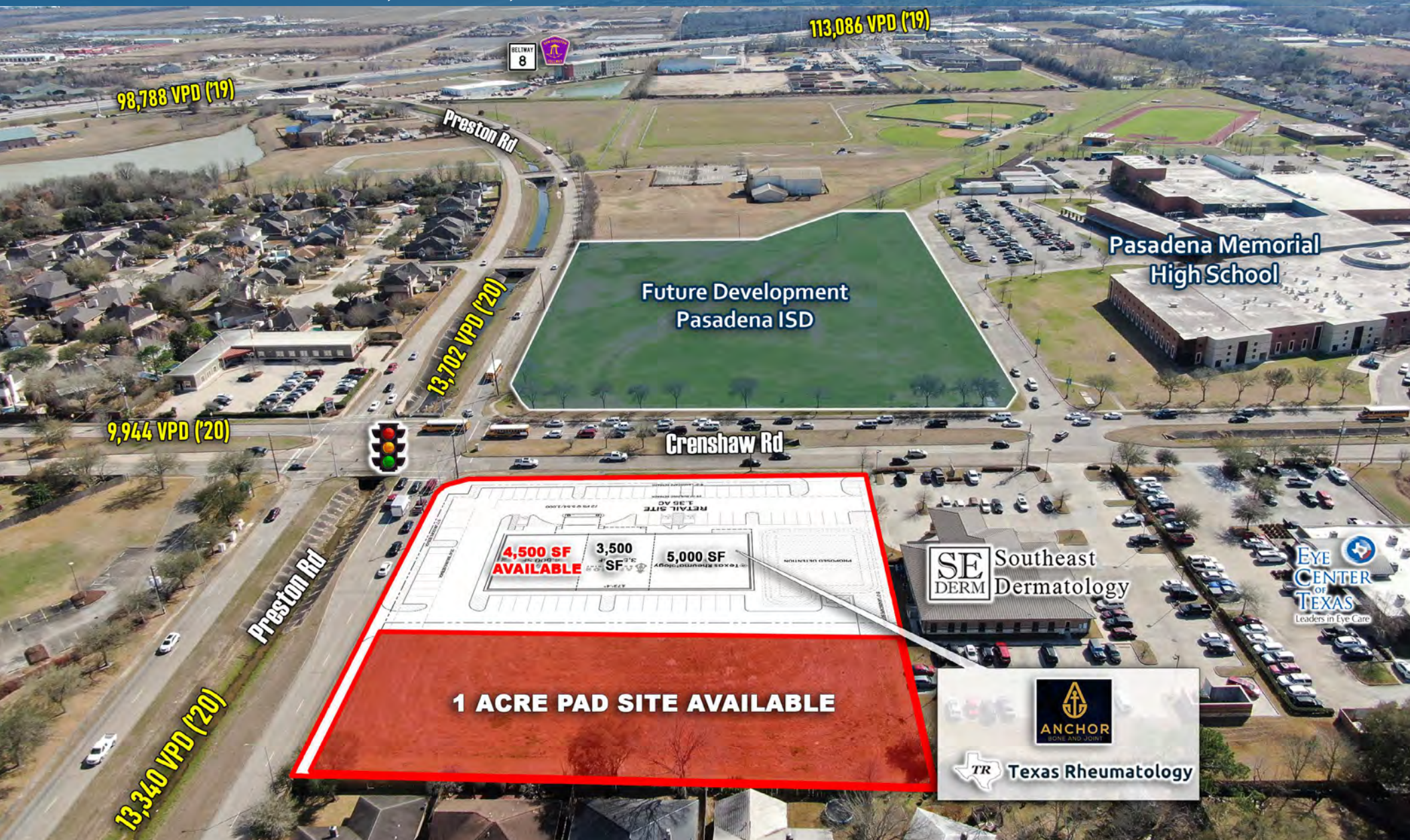


NEW RETAIL CONSTRUCTION- UP TO 4,500 SF PRE-LEASING FUTURE PAD SITE AVAILABLE

NWQ OF PRESTON & CRENSHAW, PASADENA, TEXAS 77504



S&P INTERESTS

SHAN PATEL
281.948.5353

spatel@spinterests.com

HENRY GARCIA
281.433.5736

henry@spinterests.com

ETHAN BECK
832.454.8586

ebeck@spinterests.com

WWW.SPINTERESTS.COM

Main: 713.766.4500

5353 WEST ALABAMA, SUITE 306

HOUSTON, TX 77056

The information herein has been obtained from sources believed reliable, however, S & P Interests, LLC does not guarantee, warranty or make any representations to the completeness or accuracy thereof. The information pertaining to this property is subject to errors, omissions, change of price, or conditions, prior to sale or lease, or the withdrawal of this offer without notice.

PROPERTY OVERVIEW



ADDRESS

NWQ of Preston & Crenshaw
Pasadena, Texas 77504



MEDICAL/MIXED-USE DEVELOPMENT

+/- 4,500 SF Now Pre-Leasing



FUTURE PAD SITE

± 1 Acre



AVG HOUSEHOLD INCOME

\$75,475 (1 mile Radius)



POPULATION

102,844 (3 mile Radius)



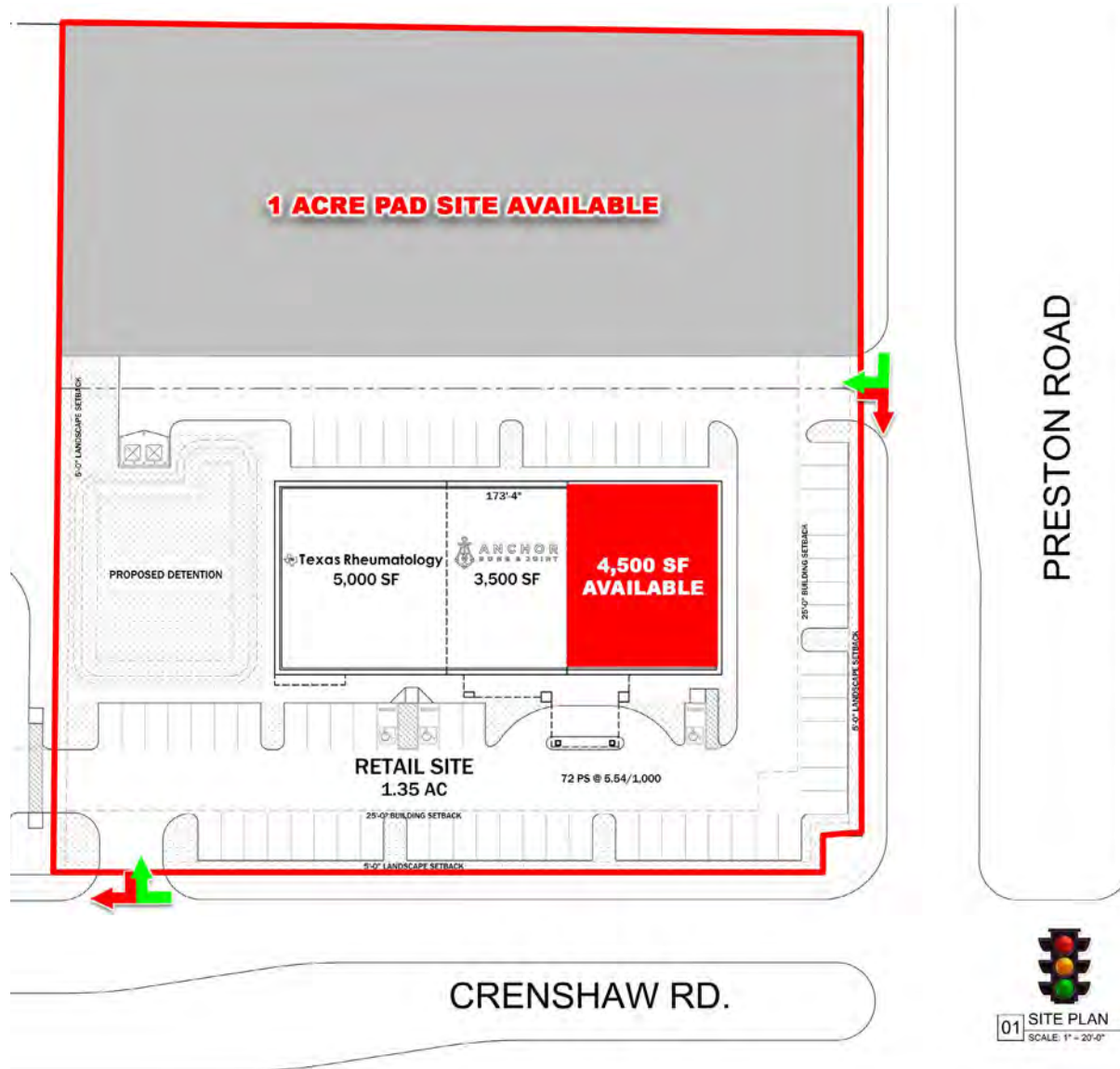
PARKING

125 Spaces



TRAFFIC COUNTS

Preston Rd: 13,702 VPD | Crenshaw Rd: 9,944 VPD



S&P INTERESTS

SHAN PATEL

281.948.5353

spatel@spinterests.com

HENRY GARCIA

281.433.5736

henry@spinterests.com

ETHAN BECK

832.454.8586

ebeck@spinterests.com

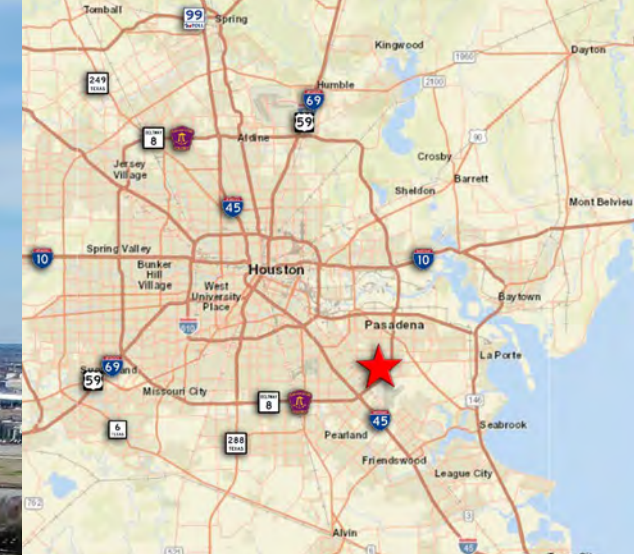
WWW.SPINTERESTS.COM

Main: 713.766.4500

5353 WEST ALABAMA, SUITE 306

HOUSTON, TX 77056

The information herein has been obtained from sources believed reliable, however, S & P Interests, LLC does not guarantee, warranty or make any representations to the completeness or accuracy thereof. The information pertaining to this property is subject to errors, omissions, change of price, or conditions, prior to sale or lease, or the withdrawal of this offer without notice.



PROPERTY FEATURES:

- New Medical/Mixed Use Development Now Pre-Leasing
- +/- 4,500 SF End-Cap Space
- Future Pad Site Available
- Strong Co-Tenants
- Near Pasadena Memorial High School
- Marquee Signage
- Call for Pricing

DEMOGRAPHIC SUMMARY:

Radius	1 Mile	3 Mile	5 Mile
2020 Population	16,082	102,844	318,437
2025 Population Est.	16,577	107,653	332,516
Daytime Population	14,817	100,107	298,466
Average HH Income	\$75,475	\$69,533	\$73,088

TRAFFIC COUNTS: Preston Rd: 13,702 VPD
Crenshaw Rd: 9,944 VPD

S&P INTERESTS

SHAN PATEL
281.948.5353
spatel@spinterests.com

HENRY GARCIA
281.433.5736
henry@spinterests.com

ETHAN BECK
832.454.8586
ebeck@spinterests.com

WWW.SPINTERESTS.COM
Main: 713.766.4500
5353 WEST ALABAMA, SUITE 306
HOUSTON, TX 77056

The information herein has been obtained from sources believed reliable, however, S & P Interests, LLC does not guarantee, warranty or make any representations to the completeness or accuracy thereof. The information pertaining to this property is subject to errors, omissions, change of price, or conditions, prior to sale or lease, or the withdrawal of this offer without notice.

NEW RETAIL CONSTRUCTION- UP TO 4,500 SF PRE-LEASING

FUTURE PAD SITE

NWQ OF PRESTON & CRENSHAW, PASADENA, TEXAS 77504



S&P INTERESTS

SHAN PATEL

281.948.5353

spatel@spinterests.com

HENRY GARCIA

281.433.5736

henry@spinterests.com

ETHAN BECK

832.454.8586

ebeck@spinterests.com

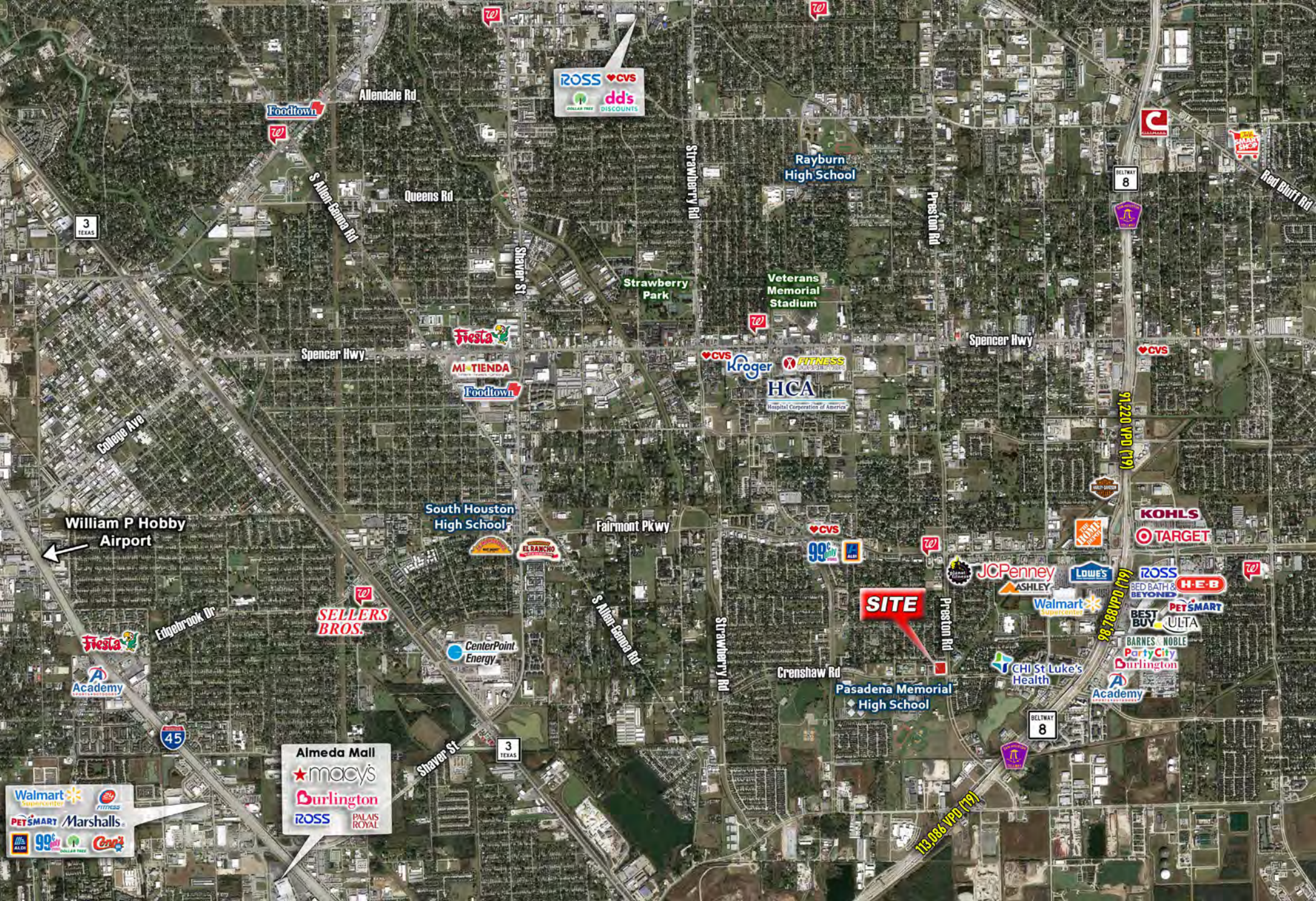
WWW.SPINTERESTS.COM

Main: 713.766.4500

5353 WEST ALABAMA, SUITE 306

HOUSTON, TX 77056

The information herein has been obtained from sources believed reliable, however, S & P Interests, LLC does not guarantee, warranty or make any representations to the completeness or accuracy thereof. The information pertaining to this property is subject to errors, omissions, change of price, or conditions, prior to sale or lease, or the withdrawal of this offer without notice.



S&P INTERESTS

The information herein has been obtained from sources believed reliable, however, S & P Interests, LLC does not guarantee, warranty or make any representations to the completeness or accuracy thereof. The information pertaining to this property is subject to errors, omissions, change of price, or conditions, prior to sale or lease, or the withdrawal of this offer without notice.

SHAN PATEL
281.948.5353
spatel@spinterests.com

HENRY GARCIA
281.433.5736
henry@spinterests.com

ETHAN BECK
832.454.8586
ebeck@spinterests.com

WWW.SPINTERESTS.COM
Main: 713.766.4500
5353 WEST ALABAMA, SUITE 306
HOUSTON, TX 77056

	1 mile	3 miles	5 miles
Population Summary			
2000 Total Population	12,247	78,642	267,987
2010 Total Population	15,127	94,656	298,248
2020 Total Population	16,082	102,844	318,437
2020 Group Quarters	144	446	1,030
2025 Total Population	16,577	107,653	332,516
2020-2025 Annual Rate	0.61%	0.87%	
2020 Total Daytime Population	14,817	100,107	298,466
Workers	6,284	43,964	121,074
Residents	8,533	56,143	177,392
Household Summary			
2000 Households	4,766	27,589	89,113
2000 Average Household Size	2.53	2.83	2.99
2010 Households	5,656	31,855	96,804
2010 Average Household Size	2.65	2.96	3.07
2020 Households	6,007	34,000	101,702
2020 Average Household Size	2.65	3.01	3.12
2025 Households	6,185	35,387	105,589
2025 Average Household Size	2.66	3.03	3.14
2020-2025 Annual Rate	0.59%	0.80%	0.75%
2010 Families	3,904	23,114	72,558
2010 Average Family Size	3.24	3.50	3.57
2020 Families	4,066	24,469	75,776
2020 Average Family Size	3.27	3.58	3.64
2025 Families	4,177	25,464	78,707
2025 Average Family Size	3.28	3.60	3.66
2020-2025 Annual Rate	0.54%	0.80%	0.76%
Housing Unit Summary			
2000 Housing Units	5,002	29,728	94,241
Owner Occupied Housing Units	54.4%	53.2%	56.7%
Renter Occupied Housing Units	40.9%	39.6%	37.8%
Vacant Housing Units	4.7%	7.2%	5.4%
2010 Housing Units	6,018	34,937	106,036
Owner Occupied Housing Units	54.4%	51.2%	54.0%
Renter Occupied Housing Units	39.6%	40.0%	37.3%
Vacant Housing Units	6.0%	8.8%	8.7%
2020 Housing Units	6,358	36,925	111,119
Owner Occupied Housing Units	49.3%	47.5%	50.1%
Renter Occupied Housing Units	45.2%	44.6%	41.4%
Vacant Housing Units	5.5%	7.9%	8.5%
2025 Housing Units	6,552	38,469	115,422
Owner Occupied Housing Units	49.3%	47.5%	50.2%
Renter Occupied Housing Units	45.1%	44.5%	41.3%
Vacant Housing Units	5.6%	8.0%	8.5%
Median Household Income			
2020	\$55,621	\$53,152	\$54,481
2025	\$58,921	\$55,804	\$57,249
Median Home Value			
2020	\$168,934	\$147,843	\$143,469
2025	\$181,715	\$166,461	\$159,576
Per Capita Income			
2020	\$28,083	\$22,989	\$23,390
2025	\$30,688	\$24,894	\$25,262
Median Age			
2010	34.2	30.8	30.7
2020	34.8	32.4	32.2
2025	35.5	33.4	33.2
2020 Households by Income			
Household Income Base	6,007	34,000	101,702
<\$15,000	7.6%	9.8%	9.7%
\$15,000 - \$24,999	11.4%	10.8%	10.3%
\$25,000 - \$34,999	9.4%	11.2%	11.2%
\$35,000 - \$49,999	15.3%	14.5%	13.8%
\$50,000 - \$74,999	20.6%	19.9%	19.7%
\$75,000 - \$99,999	13.6%	12.5%	13.2%
\$100,000 - \$149,999	12.7%	14.0%	13.6%
\$150,000 - \$199,999	4.8%	4.1%	4.6%
\$200,000+	4.7%	3.1%	3.9%
Average Household Income	\$75,475	\$69,533	\$73,088

	1 mile	3 miles	5 miles
2025 Households by Income			
Household Income Base	6,185	35,387	105,589
<\$15,000	7.0%	8.9%	8.9%
\$15,000 - \$24,999	10.3%	9.9%	9.5%
\$25,000 - \$34,999	8.6%	10.7%	10.7%
\$35,000 - \$49,999	14.7%	14.2%	13.3%
\$50,000 - \$74,999	20.8%	20.1%	19.9%
\$75,000 - \$99,999	14.0%	13.0%	13.7%
\$100,000 - \$149,999	14.0%	15.1%	14.6%
\$150,000 - \$199,999	5.4%	4.8%	5.1%
\$200,000+	5.2%	3.4%	4.3%
Average Household Income	\$82,581	\$75,732	\$79,416
2020 Owner Occupied Housing Units by Value			
Total	3,135	17,527	55,659
<\$50,000	5.8%	8.0%	6.3%
\$50,000 - \$99,999	7.0%	16.4%	20.0%
\$100,000 - \$149,999	26.1%	26.8%	27.2%
\$150,000 - \$199,999	29.2%	21.1%	20.7%
\$200,000 - \$249,999	15.4%	13.2%	10.2%
\$250,000 - \$299,999	5.6%	6.3%	5.9%
\$300,000 - \$399,999	3.3%	4.4%	4.7%
\$400,000 - \$499,999	1.1%	0.7%	2.0%
\$500,000 - \$749,999	2.5%	1.6%	1.6%
\$750,000 - \$999,999	1.0%	0.7%	0.6%
\$1,000,000 - \$1,499,999	3.1%	0.7%	0.5%
\$1,500,000 - \$1,999,999	0.0%	0.1%	0.1%
\$2,000,000 +	0.0%	0.0%	0.1%
Average Home Value	\$219,226	\$177,145	\$177,662
2025 Owner Occupied Housing Units by Value			
Total	3,228	18,270	57,952
<\$50,000	5.0%	6.8%	5.4%
\$50,000 - \$99,999	5.1%	13.5%	16.6%
\$100,000 - \$149,999	22.1%	23.4%	24.1%
\$150,000 - \$199,999	27.9%	19.3%	20.0%
\$200,000 - \$249,999	18.0%	15.4%	12.3%
\$250,000 - \$299,999	7.7%	8.7%	7.7%
\$300,000 - \$399,999	5.0%	6.8%	6.3%
\$400,000 - \$499,999	2.0%	1.5%	2.7%
\$500,000 - \$749,999	2.9%	2.6%	2.5%
\$750,000 - \$999,999	1.0%	1.1%	1.1%
\$1,000,000 - \$1,499,999	3.2%	0.8%	0.9%
\$1,500,000 - \$1,999,999	0.0%	0.1%	0.2%
\$2,000,000 +	0.0%	0.0%	0.2%
Average Home Value	\$236,520	\$202,868	\$205,323
2010 Population by Age			
Total	15,128	94,658	298,245
0 - 4	7.3%	8.6%	8.7%
5 - 9	6.8%	8.4%	8.5%
10 - 14	6.8%	7.8%	8.4%
15 - 24	15.7%	15.9%	15.7%
25 - 34	14.5%	15.3%	15.1%
35 - 44	13.0%	13.3%	13.5%
45 - 54	14.1%	12.9%	13.0%
55 - 64	11.3%	8.9%	9.0%
65 - 74	5.8%	4.7%	4.6%
75 - 84	3.3%	3.0%	2.6%
85 +	1.4%	1.0%	0.9%
18 +	74.6%	70.4%	69.5%



SHAN PATEL
 281.948.5353
spatel@spinterests.com

HENRY GARCIA
 281.433.5736
henry@spinterests.com

ETHAN BECK
 832.454.8586
ebeck@spinterests.com

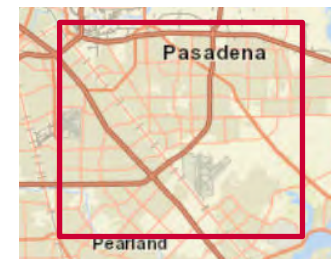
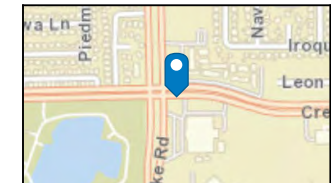
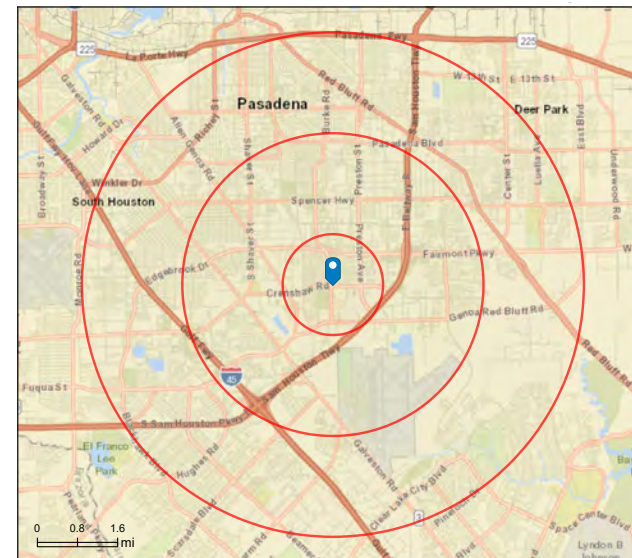
WWW.SPINTERESTS.COM
 Main: 713.766.4500
 5353 WEST ALABAMA, SUITE 306
 HOUSTON, TX 77056

	1 mile	3 miles	5 miles
2020 Population by Age			
Total	16,079	102,845	318,436
0 - 4	6.9%	8.0%	8.0%
5 - 9	6.5%	7.7%	7.8%
10 - 14	6.1%	7.2%	7.5%
15 - 24	12.9%	14.4%	14.6%
25 - 34	17.8%	16.9%	16.4%
35 - 44	12.5%	12.9%	13.0%
45 - 54	11.2%	11.1%	11.3%
55 - 64	11.4%	10.5%	10.5%
65 - 74	9.0%	6.9%	6.8%
75 - 84	3.9%	3.2%	2.9%
85 +	1.7%	1.3%	1.1%
18 +	77.1%	73.1%	72.4%
2025 Population by Age			
Total	16,577	107,653	332,516
0 - 4	7.0%	8.0%	8.0%
5 - 9	6.5%	7.6%	7.7%
10 - 14	6.4%	7.2%	7.6%
15 - 24	12.5%	13.7%	13.8%
25 - 34	16.7%	16.2%	15.8%
35 - 44	14.2%	14.3%	14.1%
45 - 54	10.3%	10.6%	11.0%
55 - 64	10.8%	9.8%	9.8%
65 - 74	9.0%	7.6%	7.5%
75 - 84	4.8%	3.7%	3.6%
85 +	1.7%	1.3%	1.1%
18 +	76.6%	73.2%	72.5%
2010 Population by Sex			
Males	7,298	46,648	147,814
Females	7,829	48,008	150,434
2020 Population by Sex			
Males	7,748	50,777	157,868
Females	8,335	52,066	160,569
2025 Population by Sex			
Males	7,993	53,205	164,859
Females	8,584	54,448	167,658
2010 Population by Race/Ethnicity			
Total	15,126	94,654	298,248
White Alone	76.7%	72.0%	68.5%
Black Alone	2.7%	4.1%	6.3%
American Indian Alone	0.5%	0.8%	0.7%
Asian Alone	4.2%	2.8%	4.3%
Pacific Islander Alone	0.1%	0.1%	0.1%
Some Other Race Alone	13.2%	17.1%	17.1%
Two or More Races	2.6%	3.0%	3.1%
Hispanic Origin	45.9%	59.7%	58.5%
Diversity Index	70.3	73.0	75.6
2020 Population by Race/Ethnicity			
Total	16,082	102,844	318,437
White Alone	72.1%	68.5%	64.9%
Black Alone	3.2%	4.5%	6.6%
American Indian Alone	0.5%	0.7%	0.7%
Asian Alone	5.2%	3.8%	5.4%
Pacific Islander Alone	0.1%	0.1%	0.1%
Some Other Race Alone	15.8%	19.1%	18.8%
Two or More Races	3.2%	3.4%	3.5%
Hispanic Origin	53.7%	65.1%	63.3%
Diversity Index	73.7	74.2	77.0

	1 mile	3 miles	5 miles
2025 Population by Race/Ethnicity			
Total	16,577	107,653	332,516
White Alone	70.4%	67.4%	63.8%
Black Alone	3.3%	4.5%	6.7%
American Indian Alone	0.5%	0.7%	0.7%
Asian Alone	5.6%	4.2%	6.0%
Pacific Islander Alone	0.1%	0.1%	0.1%
Some Other Race Alone	16.7%	19.6%	19.1%
Two or More Races	3.4%	3.6%	3.7%
Hispanic Origin	57.6%	67.9%	65.6%
Diversity Index	74.4	74.2	77.2
2010 Population by Relationship and Household Type			
Total	15,127	94,656	298,248
In Households	99.2%	99.6%	99.7%
In Family Households	85.8%	88.2%	89.5%
Householder	25.7%	24.4%	24.4%
Spouse	18.6%	16.7%	16.9%
Child	34.0%	37.8%	38.9%
Other relative	5.1%	6.4%	6.5%
Nonrelative	2.3%	2.8%	2.8%
In Nonfamily Households	13.5%	11.4%	10.1%
In Group Quarters	0.8%	0.4%	0.3%
Institutionalized Population	0.7%	0.4%	0.3%
Noninstitutionalized Population	0.0%	0.0%	0.1%
2020 Population 25+ by Educational Attainment			
Total	10,860	64,562	197,593
Less than 9th Grade	5.7%	11.9%	13.1%
9th - 12th Grade, No Diploma	6.2%	10.5%	11.2%
High School Graduate	30.5%	26.2%	24.3%
GED/Alternative Credential	5.9%	6.5%	5.3%
Some College, No Degree	24.3%	21.4%	21.0%
Associate Degree	7.9%	7.1%	7.0%
Bachelor's Degree	13.3%	11.1%	12.1%
Graduate/Professional Degree	6.1%	5.3%	6.0%
2020 Population 15+ by Marital Status			
Total	12,941	79,384	244,077
Never Married	34.9%	36.1%	36.1%
Married	47.1%	48.7%	49.4%
Widowed	5.4%	5.0%	4.6%
Divorced	12.6%	10.2%	9.9%
2020 Civilian Population 16+ in Labor Force			
Civilian Population 16+	8,441	52,612	159,896
Population 16+ Employed	90.4%	89.9%	89.3%
Population 16+ Unemployment rate	9.6%	10.1%	10.7%
Population 16-24 Employed	13.1%	14.6%	14.4%
Population 16-24 Unemployment rate	19.3%	17.8%	18.9%
Population 25-54 Employed	66.9%	66.6%	67.4%
Population 25-54 Unemployment rate	8.2%	9.0%	9.4%
Population 55-64 Employed	13.6%	13.9%	13.9%
Population 55-64 Unemployment rate	6.9%	7.7%	8.3%
Population 65+ Employed	6.3%	4.9%	4.3%
Population 65+ Unemployment rate	7.5%	7.2%	7.6%
2020 Employed Population 16+ by Industry			
Total	7,630	47,295	142,818
Agriculture/Mining	1.2%	1.6%	1.7%
Construction	11.0%	15.7%	16.0%
Manufacturing	16.2%	13.9%	12.3%
Wholesale Trade	3.5%	2.6%	2.5%
Retail Trade	9.6%	9.2%	10.0%
Transportation/Utilities	9.3%	7.2%	7.6%
Information	0.9%	0.7%	0.6%
Finance/Insurance/Real Estate	4.1%	4.3%	4.7%
Services	42.6%	42.7%	41.9%
Public Administration	1.6%	2.0%	2.7%

	1 mile	3 miles	5 miles
2020 Employed Population 16+ by Occupation			
Total	7,630	47,294	142,818
White Collar	58.1%	47.1%	48.0%
Management/Business/Financial	13.5%	9.3%	9.5%
Professional	19.8%	16.1%	16.0%
Sales	8.9%	8.1%	9.3%
Administrative Support	15.8%	13.6%	13.1%
Services	12.7%	17.2%	16.9%
Blue Collar	29.2%	35.7%	35.1%
Farming/Forestry/Fishing	0.0%	0.3%	0.3%
Construction/Extraction	6.9%	12.0%	12.9%
Installation/Maintenance/Repair	5.3%	4.6%	4.7%
Production	9.0%	10.7%	9.0%
Transportation/Material Moving	8.0%	8.1%	8.2%
2010 Households by Type			
Total	5,656	31,856	96,804
Households with 1 Person	26.0%	22.5%	20.4%
Households with 2+ People	74.0%	77.5%	79.6%
Family Households	69.0%	72.6%	75.0%
Husband-wife Families	49.8%	49.8%	52.0%
With Related Children	24.3%	28.3%	30.3%
Other Family (No Spouse Present)	19.2%	22.8%	22.9%
Other Family with Male Householder	6.2%	7.2%	7.1%
With Related Children	3.7%	4.3%	4.3%
Other Family with Female Householder	13.0%	15.6%	15.8%
With Related Children	8.6%	11.0%	11.2%
Nonfamily Households	5.0%	5.0%	4.7%
All Households with Children	37.1%	44.0%	46.3%
Multigenerational Households	5.7%	7.2%	7.9%
Unmarried Partner Households	6.7%	7.1%	7.0%
Male-female	6.2%	6.5%	6.4%
Same-sex	0.6%	0.6%	0.6%
2010 Households by Size			
Total	5,656	31,857	96,802
1 Person Household	26.0%	22.5%	20.4%
2 Person Household	29.8%	25.7%	25.1%
3 Person Household	17.1%	17.4%	17.8%
4 Person Household	14.3%	16.3%	17.0%
5 Person Household	7.5%	10.3%	10.7%
6 Person Household	3.2%	4.5%	5.1%
7 + Person Household	2.0%	3.3%	3.8%
2010 Households by Tenure and Mortgage Status			
Total	5,656	31,855	96,804
Owner Occupied	57.9%	56.1%	59.1%
Owned with a Mortgage/Loan	39.5%	37.8%	39.9%
Owned Free and Clear	18.4%	18.4%	19.3%
Renter Occupied	42.1%	43.9%	40.9%
2020 Affordability, Mortgage and Wealth			
Housing Affordability Index	153	167	175
Percent of Income for Mortgage	12.7%	11.6%	11.0%
Wealth Index	75	63	71
2010 Housing Units By Urban/ Rural Status			
Total Housing Units	6,018	34,937	106,036
Housing Units Inside Urbanized Area	100.0%	100.0%	100.0%
Housing Units Inside Urbanized Cluster	0.0%	0.0%	0.0%
Rural Housing Units	0.0%	0.0%	0.0%
2010 Population By Urban/ Rural Status			
Total Population	15,127	94,656	298,248
Population Inside Urbanized Area	100.0%	100.0%	100.0%
Population Inside Urbanized Cluster	0.0%	0.0%	0.0%
Rural Population	0.0%	0.0%	0.0%
Top 3 Tapestry Segments			
1.	Home Improvement (4B)	Barrios Urbanos (7D)	Barrios Urbanos (7D)
2.	Young and Restless (11B)	NeWest Residents (13C)	American Dreamers (7C)
3.	Bright Young Professionals (8C)	American Dreamers (7C)	NeWest Residents (13C)

	1 mile	3 miles	5 miles
2020 Consumer Spending			
Apparel & Services: Total \$	\$11,332,160	\$60,190,919	\$187,792,917
Average Spent	\$1,886.49	\$1,770.32	\$1,846.50
Spending Potential Index	88	83	86
Education: Total \$	\$8,506,144	\$43,929,606	\$139,721,046
Average Spent	\$1,416.04	\$1,292.05	\$1,373.83
Spending Potential Index	79	72	77
Entertainment/Recreation: Total \$	\$16,202,490	\$83,602,780	\$261,286,934
Average Spent	\$2,697.27	\$2,458.91	\$2,569.14
Spending Potential Index	83	76	79
Food at Home: Total \$	\$27,610,194	\$145,849,957	\$453,035,793
Average Spent	\$4,596.34	\$4,289.70	\$4,454.54
Spending Potential Index	86	80	83
Food Away from Home: Total \$	\$19,857,973	\$105,316,735	\$328,959,175
Average Spent	\$3,305.81	\$3,097.55	\$3,234.54
Spending Potential Index	88	82	86
Health Care: Total \$	\$28,723,027	\$149,009,034	\$465,533,274
Average Spent	\$4,781.59	\$4,382.62	\$4,577.42
Spending Potential Index	83	76	80
HH Furnishings & Equipment: Total \$	\$11,269,853	\$59,371,279	\$186,523,849
Average Spent	\$1,876.12	\$1,746.21	\$1,834.02
Spending Potential Index	86	80	84
Personal Care Products & Services: Total \$	\$4,816,727	\$25,124,852	\$78,610,958
Average Spent	\$801.85	\$738.97	\$772.95
Spending Potential Index	87	80	84
Shelter: Total \$	\$99,348,635	\$523,278,669	\$1,643,684,343
Average Spent	\$16,538.81	\$15,390.55	\$16,161.77
Spending Potential Index	85	79	83
Support Payments/Cash Contributions/Gifts in Kind: Total \$	\$11,881,492	\$60,625,467	\$190,148,271
Average Spent	\$1,977.94	\$1,783.10	\$1,869.66
Spending Potential Index	84	76	80
Travel: Total \$	\$11,732,670	\$60,160,319	\$191,245,633
Average Spent	\$1,953.17	\$1,769.42	\$1,880.45
Spending Potential Index	81	73	78
Vehicle Maintenance & Repairs: Total \$	\$6,047,839	\$30,961,513	\$96,126,257
Average Spent	\$1,006.80	\$910.63	\$945.18
Spending Potential Index	87	79	82



S&P INTERESTS

SHAN PATEL
281.948.5353
spatel@spinterests.com

HENRY GARCIA
281.433.5736
henry@spinterests.com

ETHAN BECK
832.454.8586
ebeck@spinterests.com

WWW.SPINTERESTS.COM
Main: 713.766.4500
5353 WEST ALABAMA, SUITE 306
HOUSTON, TX 77056

The information herein has been obtained from sources believed reliable, however, S & P Interests, LLC does not guarantee, warranty or make any representations to the completeness or accuracy thereof. The information pertaining to this property is subject to errors, omissions, change of price, or conditions, prior to sale or lease, or the withdrawal of this offer without notice.



Information About Brokerage Services

Texas law requires all real estate license holders to give the following information about brokerage services to prospective buyers, tenants, sellers and landlords.

11-2-2015

TYPES OF REAL ESTATE LICENSE HOLDERS:

- **A BROKER** is responsible for all brokerage activities, including acts performed by sales agents sponsored by the broker.
- **A SALES AGENT** must be sponsored by a broker and works with clients on behalf of the broker.

A BROKER'S MINIMUM DUTIES REQUIRED BY LAW (A client is the person or party that the broker represents):

- Put the interests of the client above all others, including the broker's own interests;
- Inform the client of any material information about the property or transaction received by the broker;
- Answer the client's questions and present any offer to or counter-offer from the client; and
- Treat all parties to a real estate transaction honestly and fairly.

A LICENSE HOLDER CAN REPRESENT A PARTY IN A REAL ESTATE TRANSACTION:

AS AGENT FOR OWNER (SELLER/LANDLORD): The broker becomes the property owner's agent through an agreement with the owner, usually in a written listing to sell or property management agreement. An owner's agent must perform the broker's minimum duties above and must inform the owner of any material information about the property or transaction known by the agent, including information disclosed to the agent or subagent by the buyer or buyer's agent.

AS AGENT FOR BUYER/TENANT: The broker becomes the buyer/tenant's agent by agreeing to represent the buyer, usually through a written representation agreement. A buyer's agent must perform the broker's minimum duties above and must inform the buyer of any material information about the property or transaction known by the agent, including information disclosed to the agent by the seller or seller's agent.

AS AGENT FOR BOTH - INTERMEDIARY: To act as an intermediary between the parties the broker must first obtain the written agreement of *each party* to the transaction. The written agreement must state who will pay the broker and, in conspicuous bold or underlined print, set forth the broker's obligations as an intermediary. A broker who acts as an intermediary:

- Must treat all parties to the transaction impartially and fairly;
- May, with the parties' written consent, appoint a different license holder associated with the broker to each party (owner and buyer) to communicate with, provide opinions and advice to, and carry out the instructions of each party to the transaction.
- Must not, unless specifically authorized in writing to do so by the party, disclose:
 - o that the owner will accept a price less than the written asking price;
 - o that the buyer/tenant will pay a price greater than the price submitted in a written offer; and
 - o any confidential information or any other information that a party specifically instructs the broker in writing not to disclose, unless required to do so by law.

AS SUBAGENT: A license holder acts as a subagent when aiding a buyer in a transaction without an agreement to represent the buyer. A subagent can assist the buyer but does not represent the buyer and must place the interests of the owner first.

TO AVOID DISPUTES, ALL AGREEMENTS BETWEEN YOU AND A BROKER SHOULD BE IN WRITING AND CLEARLY ESTABLISH:

- The broker's duties and responsibilities to you, and your obligations under the representation agreement.
- Who will pay the broker for services provided to you, when payment will be made and how the payment will be calculated.

LICENSE HOLDER CONTACT INFORMATION: This notice is being provided for information purposes. It does not create an obligation for you to use the broker's services. Please acknowledge receipt of this notice below and retain a copy for your records.

Licensed Broker /Broker Firm Name or Primary Assumed Business Name	License No.	Email	Phone
Designated Broker of Firm	License No.	Email	Phone
Licensed Supervisor of Sales Agent/ Associate	License No.	Email	Phone
Sales Agent/Associate's Name	License No.	Email	Phone

Buyer/Tenant/Seller/Landlord Initials _____ Date _____

Regulated by the Texas Real Estate Commission

Information available at www.trec.texas.gov
IABS 1-0